

# INTEGRA - Embedded Monitor



## KEY FEATURES

### 1. ALL-IN-ONE DETECTOR + METER

Plug your detectors directly into your PC with the INTEGRA embedded monitor

### 2. INCREDIBLE PERFORMANCE

INTEGRA detectors offer the same performance as the usual detector + monitor combination

### 3. COMPACT SIZE

Perfect for the lab, OEM applications and field servicing. No need to carry a meter!

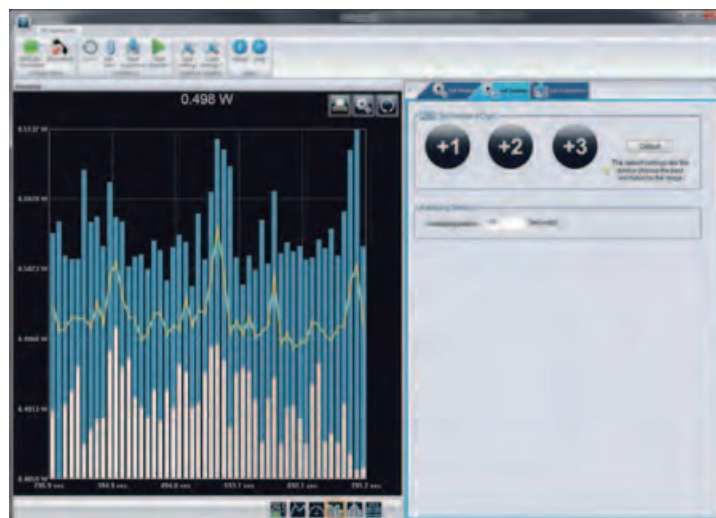
### 4. LOWER RECALIBRATION COSTS

One Product = One Calibration. Reduce your recalibration costs by half!

### 5. UNIVERSAL SOFTWARE

Control your INTEGRA detector with the same powerful software as the MAESTRO

## PC - GENTEC - EO SOFTWARE



### UNIVERSAL

Compatible with INTEGRA detectors and MAESTRO\*

### EASY-TO-USE

Clear and concise user interface with attractive graphics and well organized functions

## AVAILABLE PRODUCTS

## ENERGY DETECTORS

MODEL	APERTURE	E <sub>max</sub> .	P <sub>max</sub> .
QE8SP-B-MT-INT	7.8 x 7.8 mm	1.3 mJ	500 mW
QE8SP-B-BL-INT	7.8 x 7.8 mm	3.6 mJ	500 mW
QE25SP-S-MT-INT	25 x 25 mm	3 J	5 W
QE25SP-H-MT-INT	25 x 25 mm	3 J	10 W
QE25LP-S-MB-INT	25 x 25 mm	3.8 J	5 W
QE25LP-H-MB-INT	25 x 25 mm	3.8 J	10 W

## POWER DETECTORS

MODEL	APERTURE	P <sub>max</sub> .	ABSORBER TYPE
XLP12-3S-H2-INT	12 mm Ø	3 W	Broadband
XLPF12-3S-H2-INT	12 mm Ø	3 W	Broadband
UP12E-10S-H5-INT	12 mm Ø	10 W	Broadband
UP19K-15S-H5-INT	19 mm Ø	15 W	Broadband
UP19K-15S-W5-INT	17 mm Ø	15 W	High Threshold
UP19K-15S-VR-INT	18 mm Ø	15 W	Volume Abs.
UP12E-20H-H5-INT	12 mm Ø	20 W	Broadband
UP19K-30H-H5-INT	19 mm Ø	30 W	Broadband
UP19K-30H-W5-INT	17 mm Ø	30 W	High Threshold
UP19K-30H-VR-INT	18 mm Ø	30 W	Volume Abs.
UP55N-40S-H9-INT	55 mm Ø	40 W	Broadband
UP19K-50L-H5-INT	19 mm Ø	50 W	Broadband
UP19K-50L-W5-INT	17 mm Ø	50 W	High Threshold
UP55N-50S-VR-INT	55 mm Ø	50 W	Volume Abs.
UP55N-100H-H9-INT	55 mm Ø	100 W	Broadband
UP55N-100H-VR-INT	55 mm Ø	100 W	Volume Abs.
UP19K-110F-H9-INT	19 mm Ø	110 W	Broadband
UP19K-150W-H5-INT	19 mm Ø	150 W	Broadband
UP55N-300F-H12-INT	55 mm Ø	300 W	Broadband

## PHOTO DETECTORS

MODEL	APERTURE	P <sub>max</sub> / E <sub>max</sub> .	λ RANGE
PH5B-Ge-INT	5 mm Ø	40 μW	800-1650 nm
PH10B-Si-INT	10 mm Ø	200 μW	210-1080 nm
PE5B-Ge-INT	5 mm Ø	3 nJ	800-1650 nm
PE10B-Si-INT	10 mm Ø	150 nJ	210-1080 nm